



Software Reference Guide

Bluetooth for Windows XP

Document Part Number: 284388-001

March 2002

Contents

1 Bluetooth for Windows XP Components

Device Addresses and Names	1-2
Device Types	1-2
Class of Device	1-3
Security	1-3
Authorization	1-4
Authentication	1-4
Service Level	1-5
Profiles and Services	1-5
Clients, Servers and Services	1-8
Device Inquiry and Service Discovery	1-8
Connection Types	1-9

2 My Bluetooth Places

My Bluetooth Places	2-1
Using the Folders View	2-7
View Devices in Range	2-9
View My Bluetooth Services	2-9
File Transfer View	2-11
Remote Bluetooth Devices	2-13
Performing a Service Discovery	2-13
Bluetooth COM Ports	2-14
Dial-Up Networking	2-14
Using the Dial-Up Networking Service	2-15
Using the Bluetooth Serial Port Service	2-18
Using the Network Access Service	2-26
Using the File Transfer Service	2-29
Using Information File Exchange Service	2-31

Bluetooth for Windows XP Components

Bluetooth for Windows consists of the following software components:

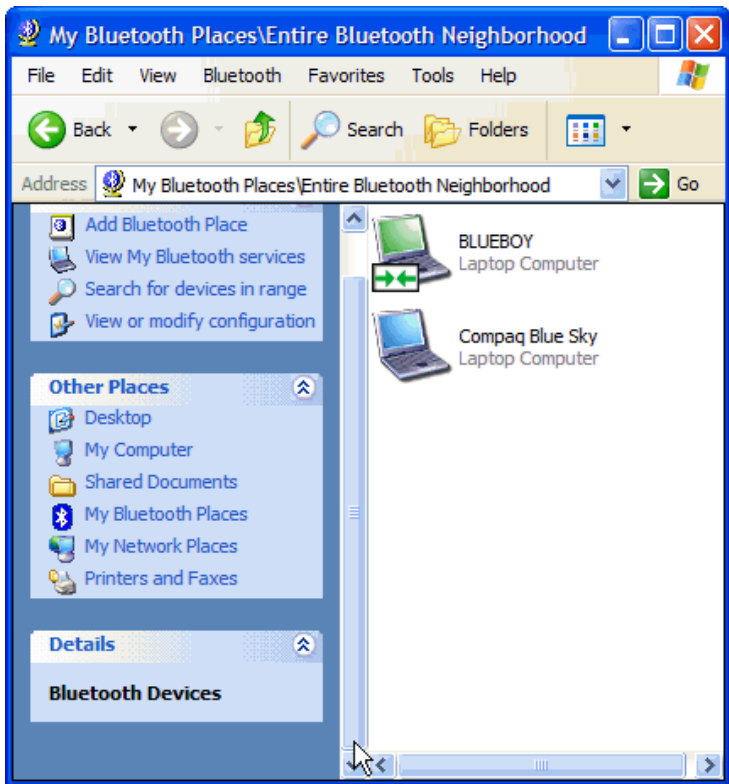
- **Windows Explorer Extensions**—Provides access to Bluetooth devices in the immediate vicinity using Windows Explorer.
- **BTTray Security Manager**—Controls and manages Bluetooth security levels. Also allows you the ability to grant or deny access and to filter what can be accessed on a Bluetooth device.
- **Bluetooth for Windows Configuration Panel**—Configures your Bluetooth for Windows (BTW) software using the Windows Control Panel.
- **Stack Server**—Provides an interface for the OS to control Bluetooth devices and to ensure that Bluetooth connections operate together correctly. The stack server has a built-in Security Manager that protects the Bluetooth device from unauthorized access.
- **My Bluetooth Places**—Provides access to Bluetooth devices in the immediate vicinity using a UI. Also provides access to configure the local devices and access to perform other Bluetooth tasks.

To access My Bluetooth Places through the Explorer view:

1. Right-click Start.
2. Select Explore.

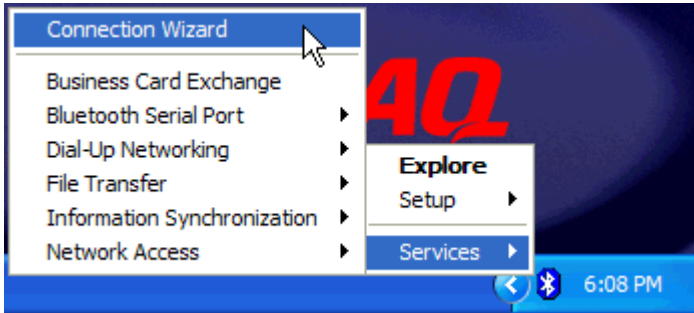
or

If the My Bluetooth Places window is open, select the folder tab located on the menu bar to display the Folders pane.



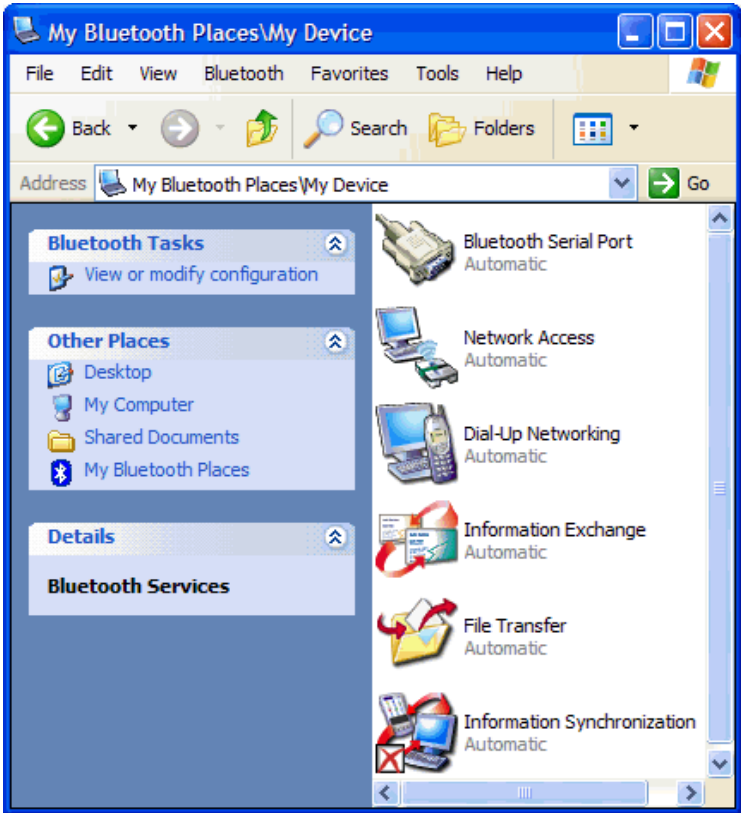
or

Right-click the Bluetooth icon in the Windows system tray
select Services > Connection Wizard.



2. Select the type of service that will be established from the menu.

- View Status of a Connection—View device connected, duration, signal quality and other settings related to the connection.
- Display Properties of this Service—View or change properties for a particular service, such as the name or level of security required for access to the service.




General Configuration Settings

The settings on the General tab of the Bluetooth Configuration Panel determine device properties and system security under the settings Identity and Bluetooth Security.

Local Services	Client Applications	Hardware	Version Info	Notifications
General	Accessibility	Discovery	Information Exchange	


Identity

 Enter a unique name in the Computer Name field. This name will be displayed to other Bluetooth devices in the area.

Computer name:

Computer type:

Security

 High: All Bluetooth devices attempting to connect to any service provided by this computer must provide a password before the connection proceeds. All data exchanged between this computer and the connecting Bluetooth device is encrypted.

Medium: Individual services provided by this computer can be configured to require a password before allowing the connection to proceed. Encryption can be enabled on a service-by-service basis. Security for individual services can be configured from the Local Services tab of the Bluetooth Configuration Panel.

Security mode:

OK Cancel Apply Help

Discovery Tab

The settings on the Discovery tab of the Bluetooth Configuration Panel determine whether your computer looks for other Bluetooth devices automatically, how often it looks, and what type of devices it looks for.

Specify the specific devices, classes of devices or types of devices within a class that this computer should discover and report.

Look for other Bluetooth devices Every minutes

Report only Selected Bluetooth devices ▼

Filter Type	Details
Device	Compaq Blue Sky
Device	BLUEBOY

Add Device Delete

OK Cancel Apply Help

To perform a periodic Search for Devices, select the Look for Other Bluetooth Devices check box to automatically search for devices every “X” minutes; 10 minutes is the default.



To change the time between auto inquiries, select the existing time and enter the new time.

BTTray Security Manager

Bluetooth System Tray (BTTray) is a Windows application that manages the security features of your Bluetooth device.

BTTray:

- Provides unobtrusive notification when intervention is required to authorize a security request or to enter a Bluetooth passkey.
- Displays system dialogs that prompt for security authorization and allow passkey entry.
- Supports pairing between Bluetooth devices.
- Provides access to the Bluetooth configuration panel.

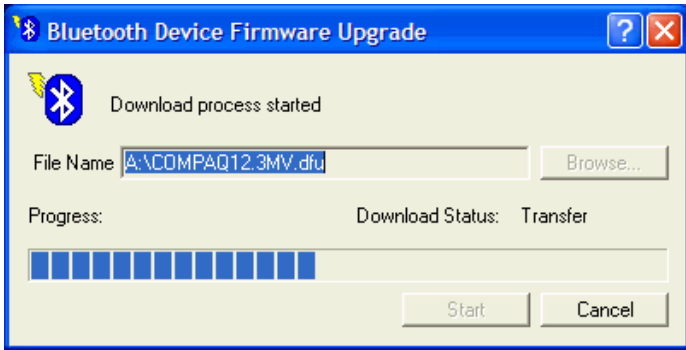
BTTray and Bluetooth Security

The Bluetooth specification provides three levels of security: low, medium, and high. In this implementation, two levels of Bluetooth security are provided: medium and high.

- **Medium Security**—Allows access to services without notification.
- **High Security**—Requires authorization.

You can modify your Bluetooth security settings through BTTray.

4. Double-click the btdfuapp.exe file to open the Bluetooth Device Firmware Upgrade dialog.

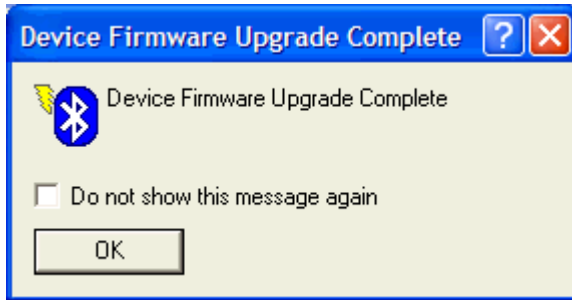


5. Select the Browse button and point to the location where the DFU file was downloaded.
6. Select the DFU file > Open > Start.



The progress bar will advance as the flash process continues. The flash upgrade will take approximate 120 seconds.

7. A USB driver will be loaded for the flash utility. If you are prompted for a USB driver, point to the C:\Program Files\Widcomm\Bluetooth Software\bin directory under Program Files and follow the screen prompts.



8. After the DFU upload is completed, click OK to close the notification window. Click the Exit button to end the flash process.

Configuring Your Network Settings to Use the Network Access Profile

The Network Access service permits a Bluetooth client to use an Ethernet connection that is physically attached to another Bluetooth device (the server).

Only one Network Access connection can be open at a given time. The connection must be closed before the client device can discover services or create another connection.

Possible Network Access servers include:

- Bluetooth-enabled computers that have a hardwired Ethernet connection.
- Stand-alone Bluetooth Network Access Points such as those in WIDCOMM's BlueGate series.

The Bluetooth server must be specifically configured to provide the Network Access service. After a Bluetooth device is configured as a Network Access server, it cannot act as a Network Access client without being reconfigured.

Setup

Windows XP Professional and Home

To set up Windows XP:

1. From the Windows Control Panel, select Network Connections.

Troubleshooting

This Appendix contains error messages that may occur and presents probable cause and solutions.

Running Setup Uninstalls BTW

PROBLEM: My computer had a previous version of BTW installed. I ran the BTW setup program to install a new version. Instead of installing the new version of BTW, setup uninstalled my old version.

PROBABLE CAUSE: The BTW software must be uninstalled before upgrading to a new or revised version. The setup program detects a previous version and uninstalls it before the new version can be installed.

RESOLUTION:

1. Uninstall the old version of BTW.
2. Run setup to install the new version of BTW.

Dial-Up Networking Service Does Not Start

PROBLEM: I have examined the Local Device entry in the service view. The Dial-Up Networking entry shows a status of Not Started.

PROBABLE CAUSE: The Dial-Up Networking service only starts if your computer has a modem connected to it and the modem is configured correctly.

- Discovery tab 3–7
- general settings 3–2
- Hardware tab 3–16
- Information Exchange settings 3–9
- Local Services tab 3–11
- Notifications tab 3–20
- overview 1–1
- Version Info tab 3–19
- viewing/modifying
 - configuration 2–1, 2–9
- configuration, network access service A–1
- Connection Wizard 2–4
- connections
 - accessibility options 3–4
 - COM port 2–14, 2–18
 - LAN A–2
 - network access service 2–26, 2–27
 - RSSI 2–22
 - status 2–10
 - testing 2–28
 - types 1–9

D

- dedicated device pairing 4–8
- deleting devices 3–6
- Desktop option 2–2
- Details function 2–2
- Device Name 4–3
- device name, common 1–2
- devices
 - adding/deleting 3–6
 - class 1–3, 3–8

- configuring hardware 3–16
- discovering 3–7
- inquiries 1–3, 1–8
- paired 4–6, B–6
- remote 2–13
- security 4–3
- types 1–2
- viewing 2–1, 2–9, B–3

- Dial-Up Networking
 - overview 1–6
 - troubleshooting B–1
 - using Bluetooth COM port 2–14
- Disable Bluetooth Service option 2–9
- disconnecting clients 2–42
- discovery of services
 - overview 1–8
 - procedure 2–13
 - troubleshooting B–7
- Discovery tab 3–7
- Display Properties of this Service option 2–10

E

- email messages, exchanging 2–31, 2–33
- encryption 3–3
- exchanging information files. *See* Information File Exchange service
- Explorer, Windows
 - accessing My Bluetooth Places from 2–3
 - extensions for BTW 1–1